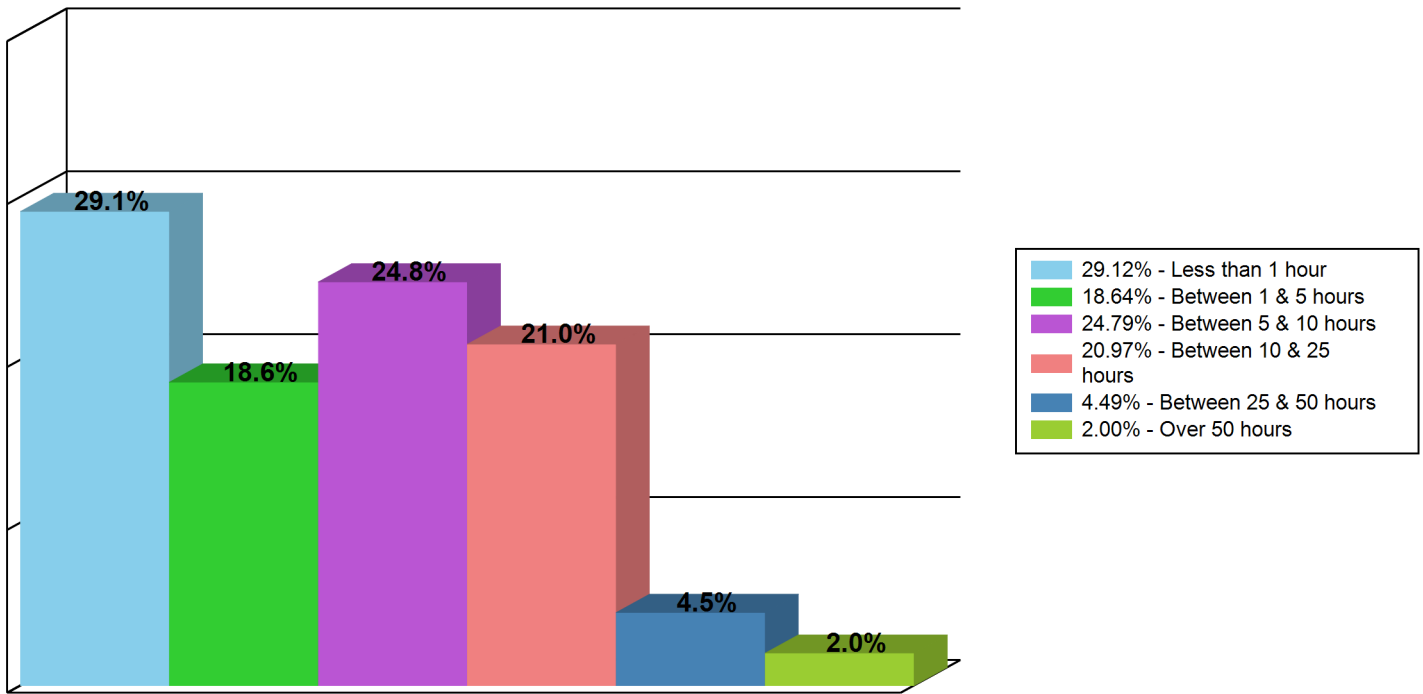


From: 30/04/2012 00:00 | To: 06/05/2012 23:59

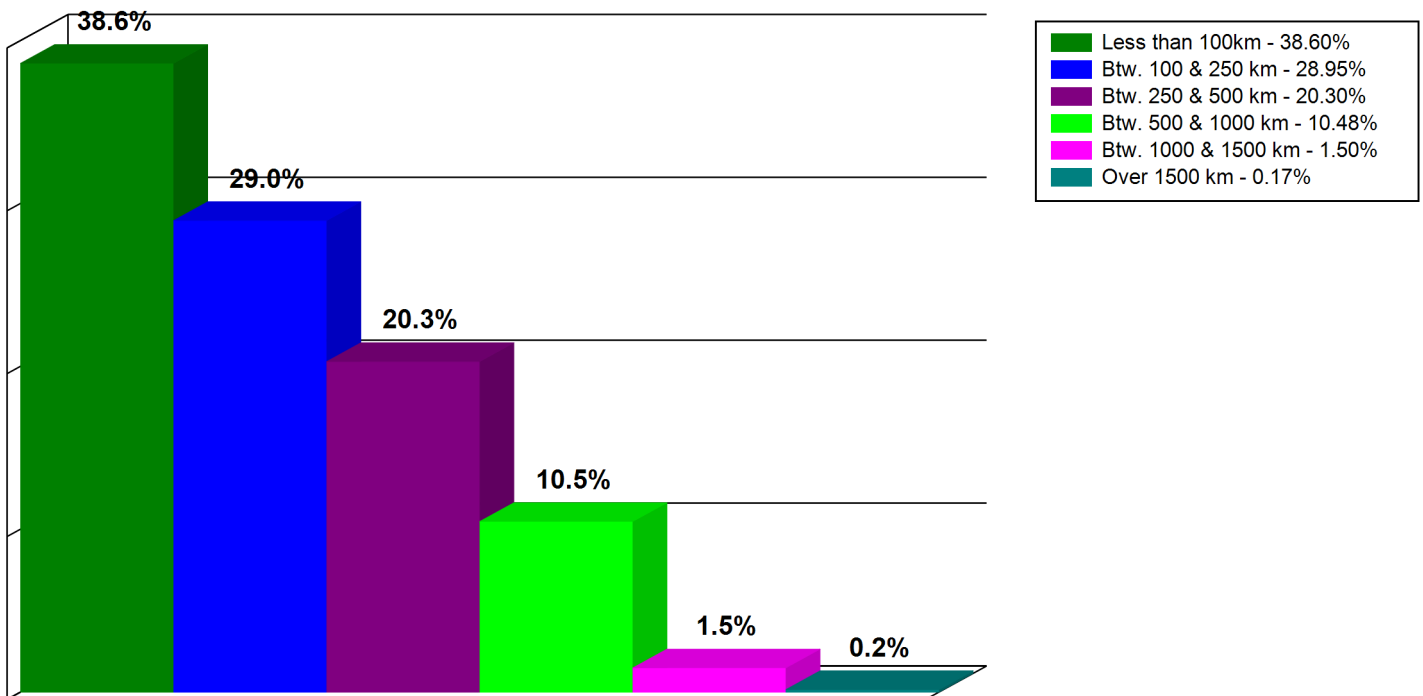
Depot: DEMO

Timezone: GMT +8

Vehicle Utilisation



KM Driven (Vehicles)

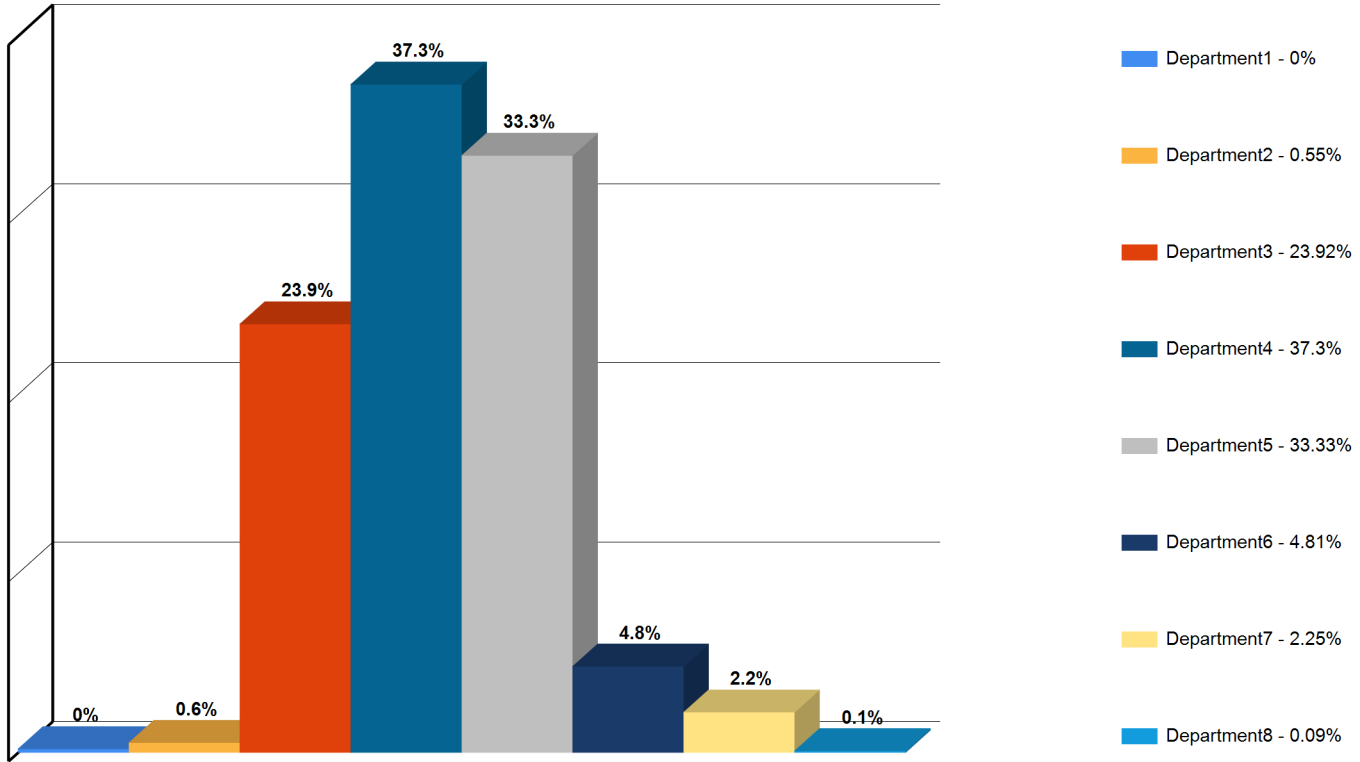


From: 30/04/2012 00:00 | To: 06/05/2012 23:59

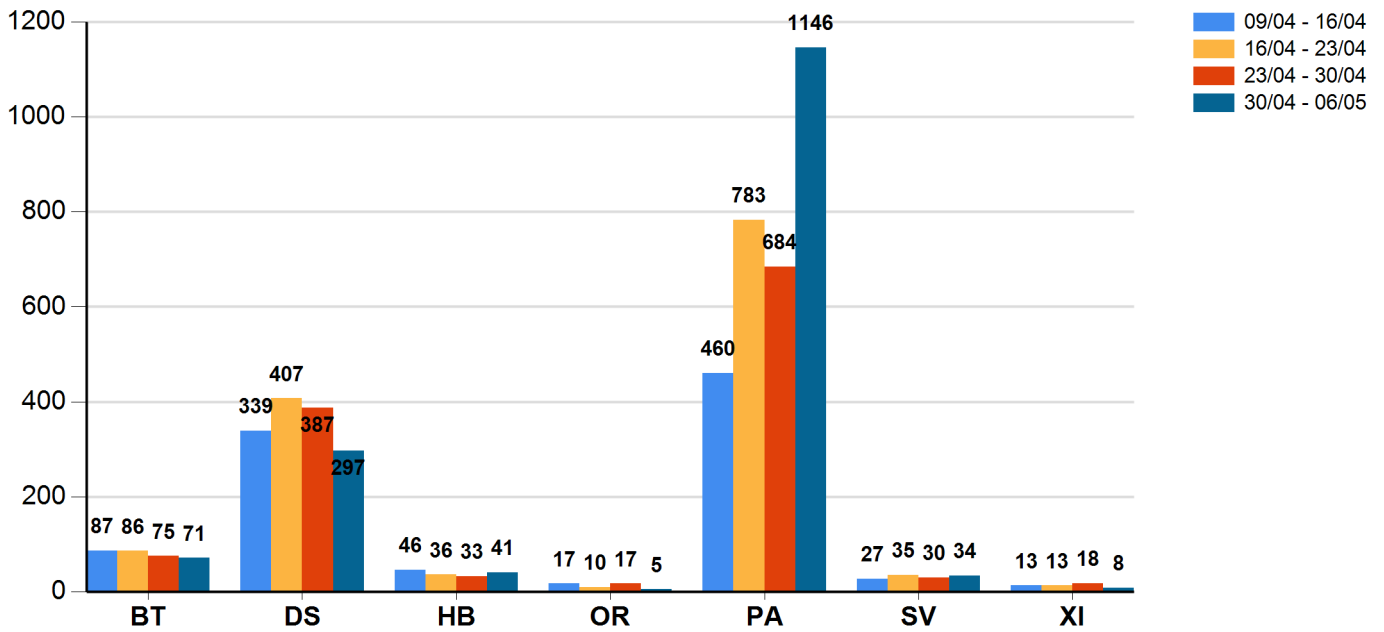
Depot: DEMO

Timezone: GMT +8

Exceptions for each Department



Exception Comparison

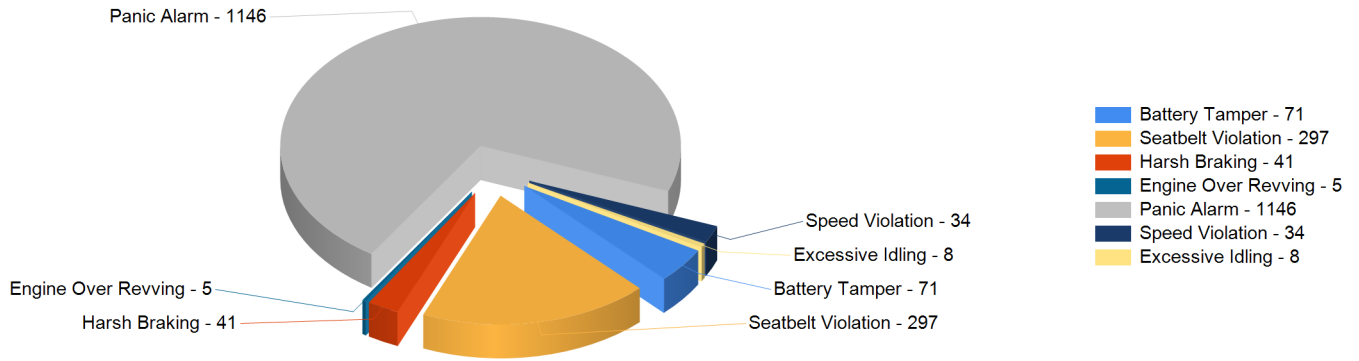


From: 30/04/2012 00:00 | To: 06/05/2012 23:59

Depot: DEMO

Timezone: GMT +8

Exception Breakdown



Total Exceptions By Departments

	BT	DS	HB	OR	PA	SV	XI	TOTAL
Department 1	0	0	0	0	0	0	0	0
Department 4	1	0	0	0	0	2	0	3
Department 12	30	122	8	3	176	11	2	352
Department 19	4	84	24	0	703	5	2	822
Department 27	22	67	7	2	110	11	4	223
Department 32	13	24	2	0	157	0	0	196
Department 38	3	3	2	0	125	2	0	135
Department 41	1	0	0	0	0	5	0	6

From: 30/04/2012 00:00 | To: 06/05/2012 23:59

Depot: DEMO

Timezone: GMT +8

Legend

BT	Battery Tamper	DS	Driver Seatbelt	HB	Harsh Braking
OR	Engine Overrevving	PA	Panic Alarm	TV	Tag Violation
SV	Speed Violation	XI	Excessive idling		
Seatbelt Violations	Occur when driver's seatbelt is not engaged while vehicle speed is over 10 km/h. Multiple seatbelt violations during a given trip are counted as one. Violations at speeds less than or equal to 30 km/h immediately followed by 0 km/h and ones just before ignition is switched off are disregarded				
Excessive Idling	Indicates that a unit has been idle for a preset amount of time, stored in unit's configuration				
Tag Violation	Driver Tag not swiped during a trip				
GPS Jump Filtering	GPS Jump filtering system is in place. It has been showing accurate results since its introduction. The goal of the system has been to filter out all suspicious looking violations so in some cases it may filter out valid violations.				
Exceptions for Department %	Percentage is calculated as (num. of exceptions in a department) / (num. of exceptions in whole site) x100%. In cases when some vehicles have multiple departments to which they belong, sum of percentages for all departments may exceed 100%.				